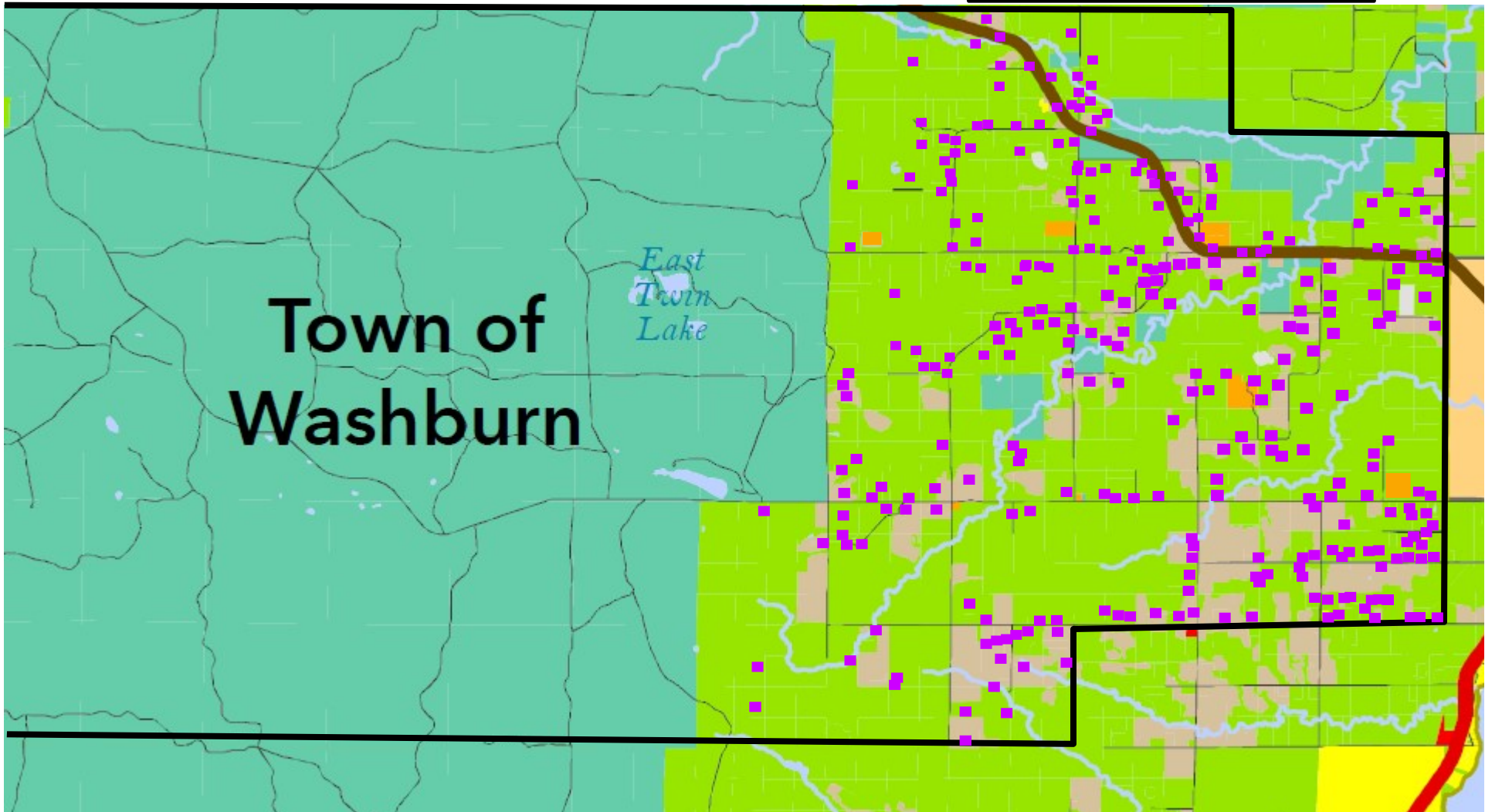


Town of Washburn Existing Land Use – 2023

From County Comprehensive Plan

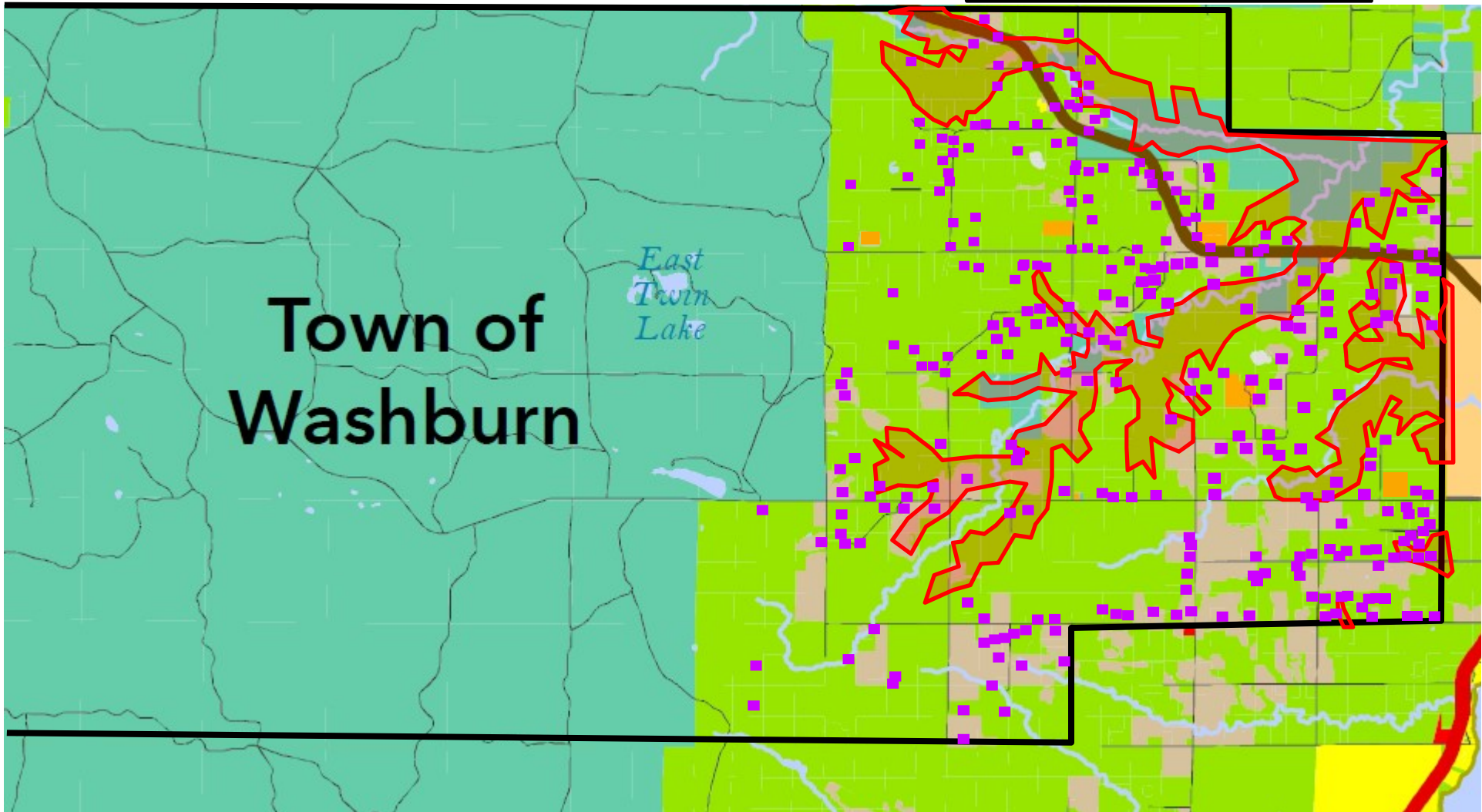
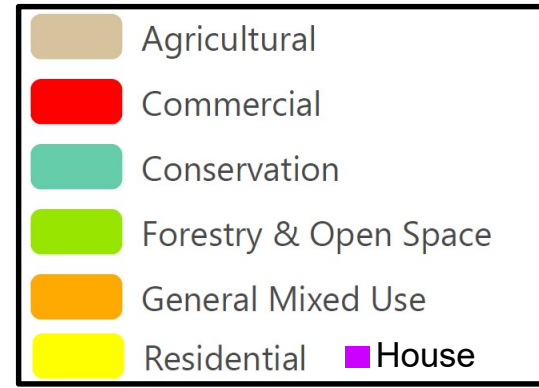


Definitions of Existing Land Use Categories

Land Use	MAPCODE	Focus	Example Land Uses
Agricultural	AG	Suitable lands allocated for future agricultural uses, including aquaculture. Typically 5-40 acres in size	Active and idle crop and pasture lands, includes residences associated with agricultural uses
Forestry and Open Space	FOR	Recreation, conservation, forest products, cabins and year-round homes. Typically 5-40 acres in size	Woodlands, wetlands and open space, residences, recreational development
Residential	RES	Suitable lands allocated for residential housing on <i>individual small lots</i> . Typically less than 5 acres in size	Residential dwellings. Typically occur within or adjacent to communities.
General Mixed Use	GMU	Suitable lands allocated for a mix of residential, commercial, governmental, utilities and institutional uses, commonly associated with unincorporated rural communities.	Wide variety of land uses. Typically occur within or adjacent to communities.
Rural Residential	RR	Suitable lands for residences on large-lot agricultural, open lands or forestry parcels. Typically 2-5 acres in size	Residential dwellings on small lots in association with forest or open space
Commercial	COM	Suitable lands allocated to accommodate consumer-oriented retail and service businesses. Includes (for-profit) outdoor recreation oriented commercial uses.	Commercial land can be any parcel of land used for commercial purposes and intended to generate a profit
Industrial	IND	Suitable lands allocated to accommodate industrial (manufacturing) and other employment-oriented uses.	Production and manufacturing of goods. Also includes gravel pits and salvage operations
Conservation	CON	Lands reserved for conservation and public recreation. Future non-development areas. Include: parks and public (non-commercial) recreation areas. May also include private non-development areas.	Public lands, private (Ex. Land trusts)

Town of Washburn Existing Land Use – 2023













Also showing Steep Slopes & Floodplains
From County Comprehensive Plan



Town of Washburn County Zoning Districts 2024

■ House

County Zoning Districts

 (R1) - Residential - 1	 (I) - Industrial
 (M) Municipal	 (F1) - Forestry - 1
 (R2) - Residential - 2	 (F2) - Forestry - 2
 (R3) - Residential - 3	 (A1) - Agricultural - 1
 (R4) - Residential - 4	 (W) - Conservancy
 (C) - Commercial	 (R-RB) - Residential - Recreational Business

